



# ESI in the mobility Journey

**Christos Kanellopoulos, GEANT**





The exchange of student records and the authentication of students are separate, thus the need for an identifier that will follow the student

The ESI is a protocol neutral identifier

ESI specifications developed with Erasmus+ and eduGAIN

Process agreed to determine which services can use it

<https://wiki.geant.org/display/SM/European+Student+Identifier>  
<https://wiki.geant.org/display/SM/European+Student+Identifier+Entity+Category>



Defined a governance for the ESI





- ✈ Student Mobility Services directly enabling mobility, for example, the Erasmus+ programme.
- ✈ Services that transfer student records or transcripts of records between educational institutions and which need to identify the students to which the records belong to.
- ✈ University Alliances where students' records are shared across (some of) the universities of the Alliance.
- ✈ Formal learning and teaching activities and/or the administrative activities related to those within an institution, for example, Learning Management Systems and remote e-assessment tools.





- ✈ Student Mobility Services directly enabling mobility, for example, the Erasmus+ programme.
- ✈ Services that transfer student records or transcripts of records between educational institutions and which need to identify the students to which the records belong to.
- ✈ University Alliances where students' records are shared across (some of) the universities of the Alliance.
- ✈ Formal learning and teaching activities and/or the administrative activities related to those within an institution, for example, Learning Management Systems and remote e-assessment tools.





The ESI is generated by the HEI. There are 2 main 'ingredients' needed:

Something to identify the HEI.

For this we use:

schacHomeOrganization value (sHO)

Something to identify the student.

For this we use:

the student number (code)

urn:schac:personalUniqueCode:int:esi: <sHO>:<code>

This is the case in which the student number is managed by the HEI

Ex: urn:schac:personalUniqueCode:int:esi:hei.edu:23490G





- The ESI is generated by the HEI. There are 2 main 'ingredients' needed:

If the student numbers are managed nationally:

The ISO country code

Something that identifies the student.  
For this we use:

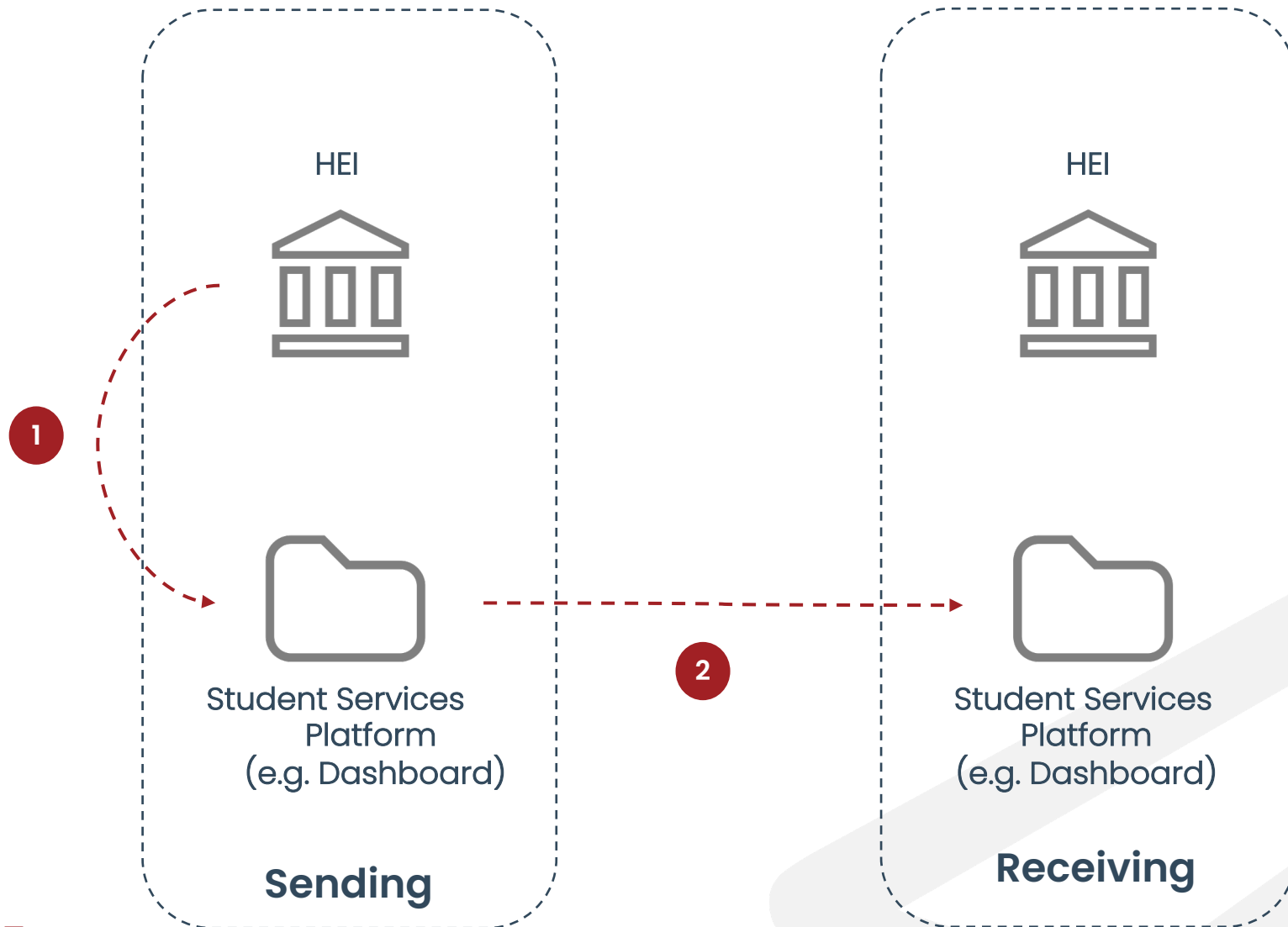
the student number (code)

urn:schac:personalUniqueCode:int:esi: <country>:<code>

This is the case in which the student number is managed by the HEI

Ex: urn:schac:personalUniqueCode:int:esi:HR:23490G





The student does not need to know the ESI.

1

ESI is typically transported via the student authentication mechanism (SSO)\*.

2

ESI is transported via the EWP APIs

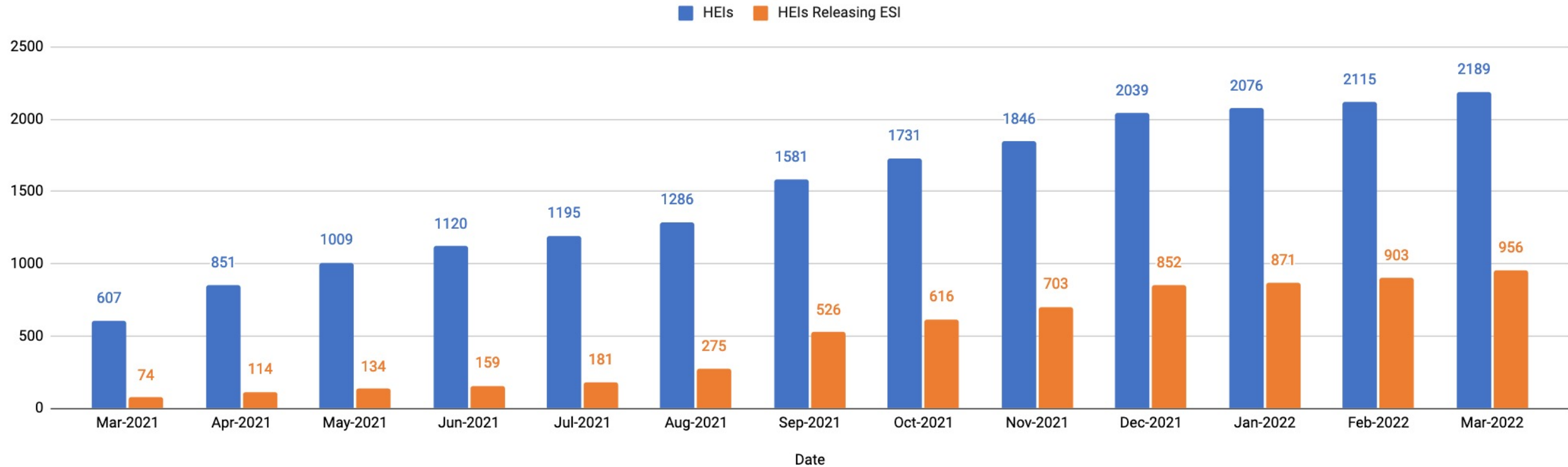
[\*] Requirements for service providers to get the ESI via the academic federations:

<https://wiki.geant.org/x/QwKCFQ>





## HEIs Supporting ESI







# Christos Kanellopoulos

Senior Trust & Identity Manager – GEANT



<http://support.erasmuswithoutpaper.eu>



[join the EWP  
LinkedIn group](#)



[Follow EWP on  
twitter](#)



Funded by  
the European Union

