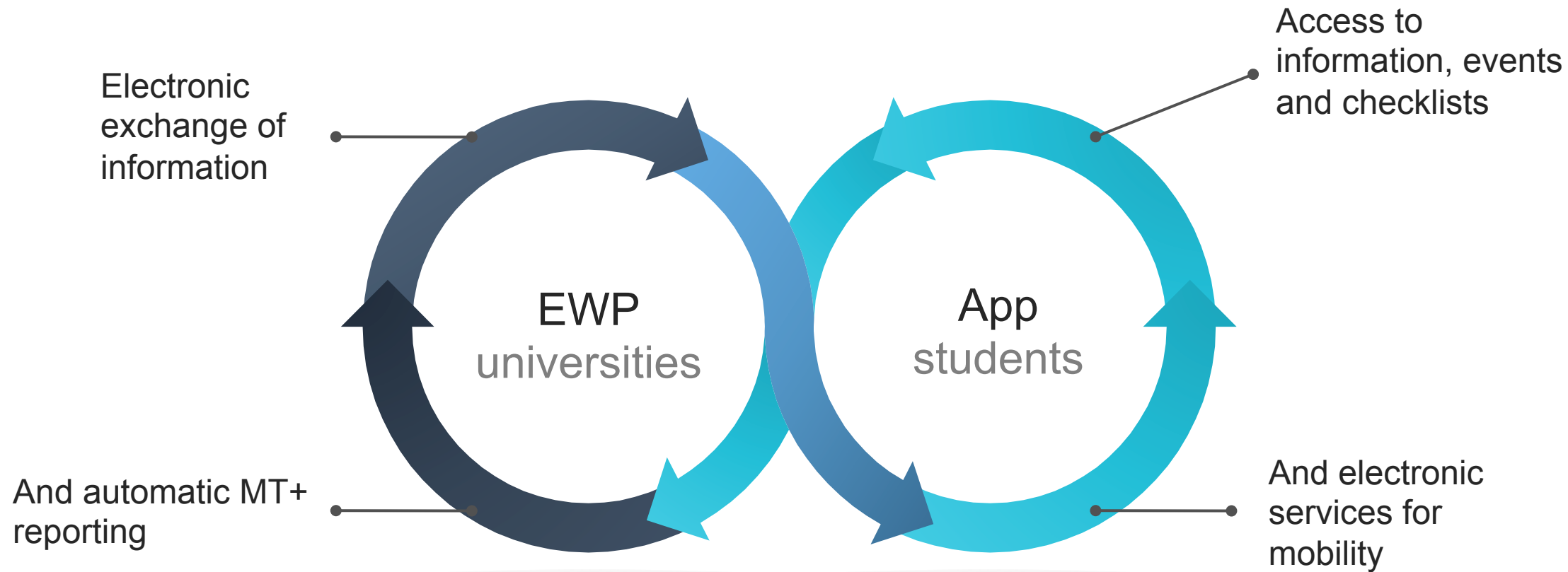




# Erasmus Without Paper for all!

Erasmus Goes Digital webinar, March 2019

Victor Aguilar and João Bacelar



# EWP in a nutshell

- Enable **interoperability** and electronic exchange of data among universities
- Interconnect all +5000 ECHE holders
- Digitise all keys steps of mobility workflows
- Ensure readiness of core services well before the start of the next programme







University 1

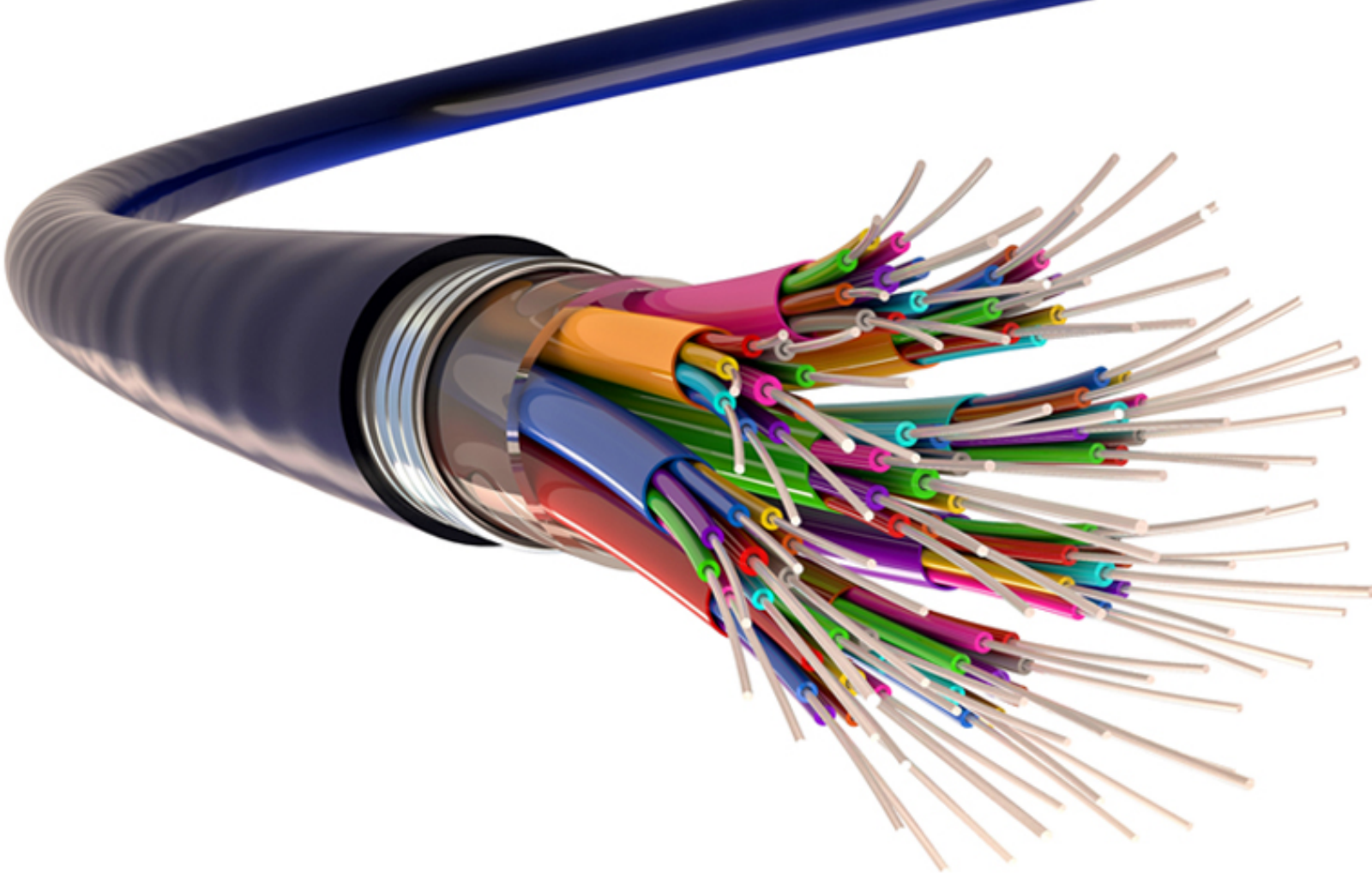


University 2



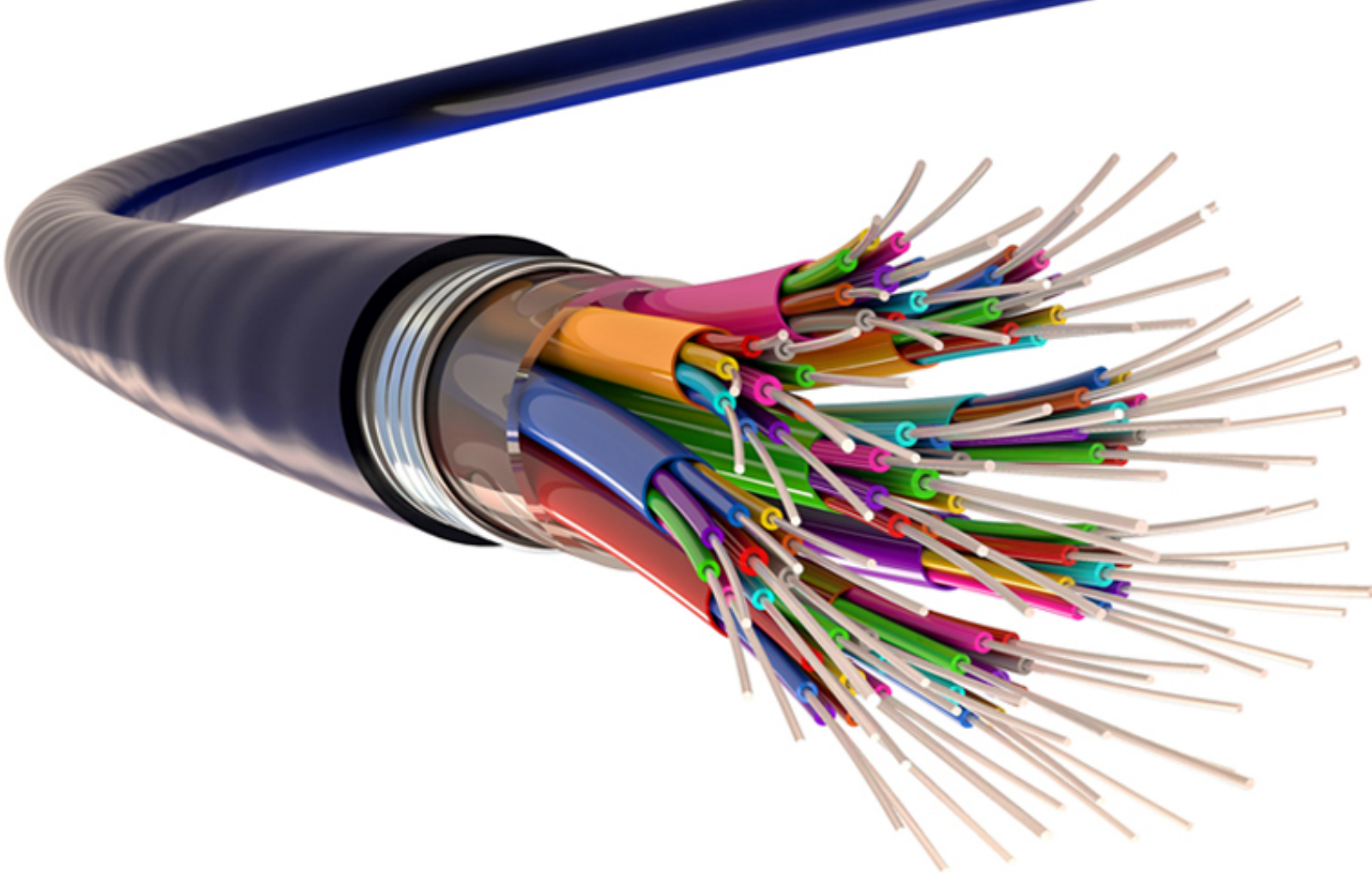
EWP





**But EWP is not just any old phone line...**





- Information about HEI
- Information about courses
- IN/OUT mobilities
- Inter-institutional agreements
- Transcript of records

**Separate channels according to the type of information being exchanged**

## What's new?

- The EWP network is live since mid-December 2018
  - After 1.5 years of development
  - And 1.5 years of testing
- All universities who have their own SIS can connect to it
  - And continue to use their existing tools
  - No fees, licenses or royalties
  - Enabling safe & electronic data exchange





## Some of the things that you can do with EWP

- Automatically update partner details
  - E.g. contact and institutional information
- Renew your IIA and receive changes online
  - No more printing and signing, no more factsheets
- Switch to electronic arrival/departure certificates
  - Easier and more accurate calculation of Erasmus grants
- Instantly send electronic ToR
  - Improving recognition and decreasing workload



## New functionality being developed

Integration with:

- OLA for learning agreements;
- Egracons for grade conversation;
- ESC for European Student Card;
- And the MT+ for automatic reporting.



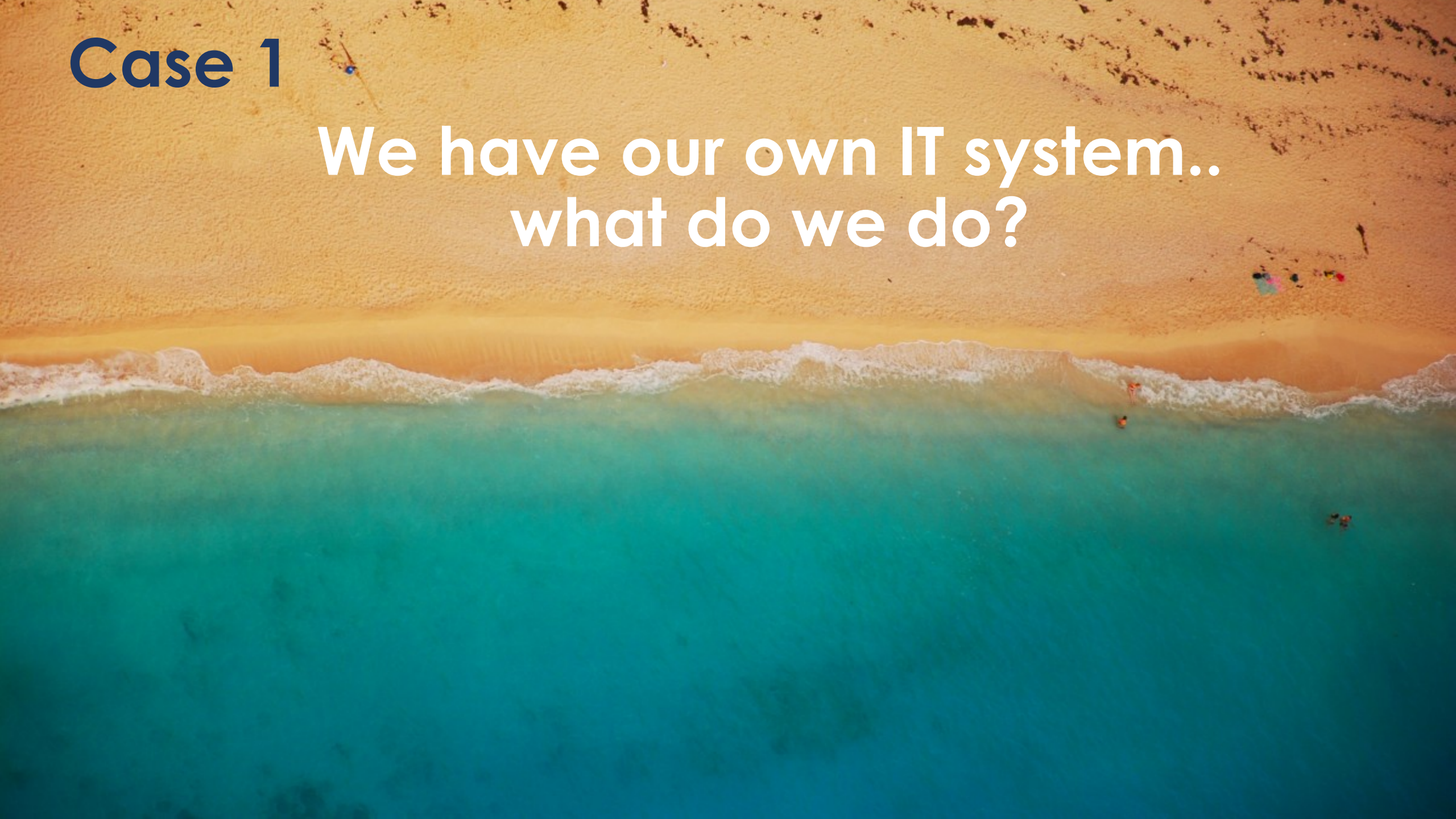
**Are you feeling ready to join EWP?**



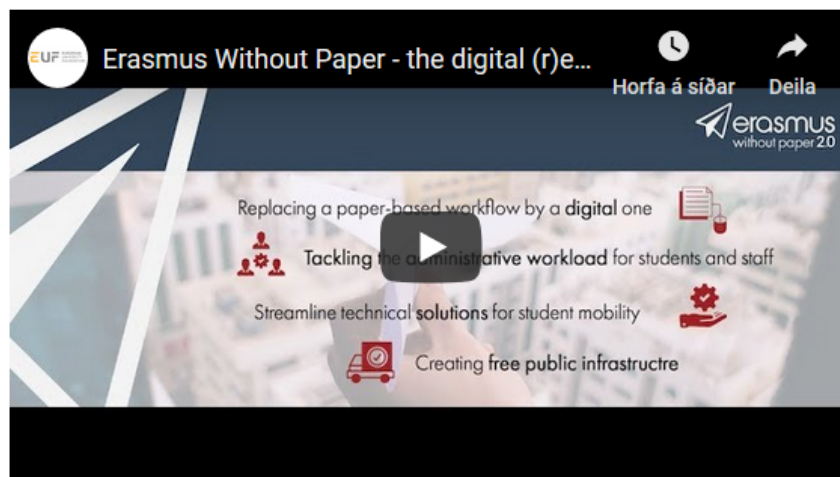


# Case 1

We have our own IT system..  
what do we do?



# Competence Centre



## Welcome to the Competence Centre for Erasmus Without Paper

Here you will find useful resources, tutorial videos, presentations and other tools and material to support you with the transition from a paper based work flow to manage your Erasmus mobilities to a completely digital workflow.

We compiled resource according to who you are. Find in the following all relevant material.

**NOTE:** The Competence Centre is still under development. More resources will be added over the course of 2019.

[Erasmus mobility coordinators](#)

[Higher Education Institution leadership](#)

[IT teams & 3rd party mobility software providers](#)

# To connect your IT system directly to EWP:

To get started today go to:

<https://www.erasmuswithoutpaper.eu/cc>

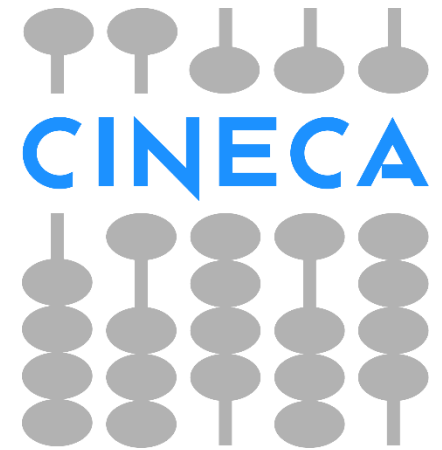
- All the information you will need can be found in **the EWP Competence Centre**:
  - The technical documentation for your IT staff to connect your system to EWP
  - Video tutorials and FAQs for mobility coordinators
  - The competence centre will be updated throughout 2019 as new functionalities become available



# Case 2

An aerial photograph of a beach. The top half of the image shows golden sand with some dark spots and a few small figures. The bottom half shows turquoise water with white foam from waves breaking onto the shore. The overall scene is bright and sunny.

**We use a commercial IT service provider – what should we do?**



helping universities succeed



# No worries! Commercial providers can connect you to EWP!

For more information go to:

[https://www.erasmuswithoutpaper.eu/commercial-  
tool](https://www.erasmuswithoutpaper.eu/commercial-tool)

- Many of the biggest commercial providers are already integrating the EWP standards into their services so **you will automatically be connected**
- If your service provider is not already a partner – ask them to get in touch with us at [contact@uni-foundation.eu](mailto:contact@uni-foundation.eu). We will be happy to assist them **to ensure all universities can be connected!**



# Case 3

An aerial photograph of a tropical beach. The top half of the image shows a wide expanse of golden sand. The bottom half shows clear, turquoise water with white foam from waves breaking onto the shore. A few small figures of people are visible on the beach and in the shallow water.

**We don't have any IT system for student mobilities – is EWP also for us?**





**If your IT tools are too old or non-existent...**



It's ok. We've built new ones **for you!**

They are called the **Erasmus Dashboard**



## The Erasmus (without Paper) Dashboard

- Launched in February 2018
  - Developed by the Online Learning Agreement team
- A public solution for HEIs without suitable IT tools
- **Cloud-based and free of charge**
- Already integrated with OLA and Erasmus+ App



## How can I use the Dashboard?

- All ECHE holders can request an account at <https://www.erasmus-dashboard.eu>
- Once the main account is validated, other colleagues can be added to your user area



## What will happen in the months ahead?

- Inter-institutional agreement manager @ Dashboard
  - Supporting bilateral and multilateral agreements
    - Search for partners among ECHE holders
    - Specify what faculties are taking part in the agreement
    - Indicate cooperation conditions: number of mobilities per year, semester students can apply for, language skills and other basic requirements (e.g. CV, cover letter, interviews, ToR), etc.
  - Enabling critical information to be easily updated and kept at fingertips of your students and partners
- Course catalogue integration @ OLA





## We are building together a powerful online ecosystem

- Since its launch in early 2018
  - + 830 HEIs
  - + 1400 IROs
  - + 30,000 OLAs
  - + 59,000 App users
- OLA for placements (beta)
  - Launched in December 2018



# A welcome change of paradigm

1. Documents flowing seamlessly among IROs
2. In machine readable format
3. Radical efficiency gains
4. Improved quality and compliance
5. Connecting partners across Europe (and eventually beyond)





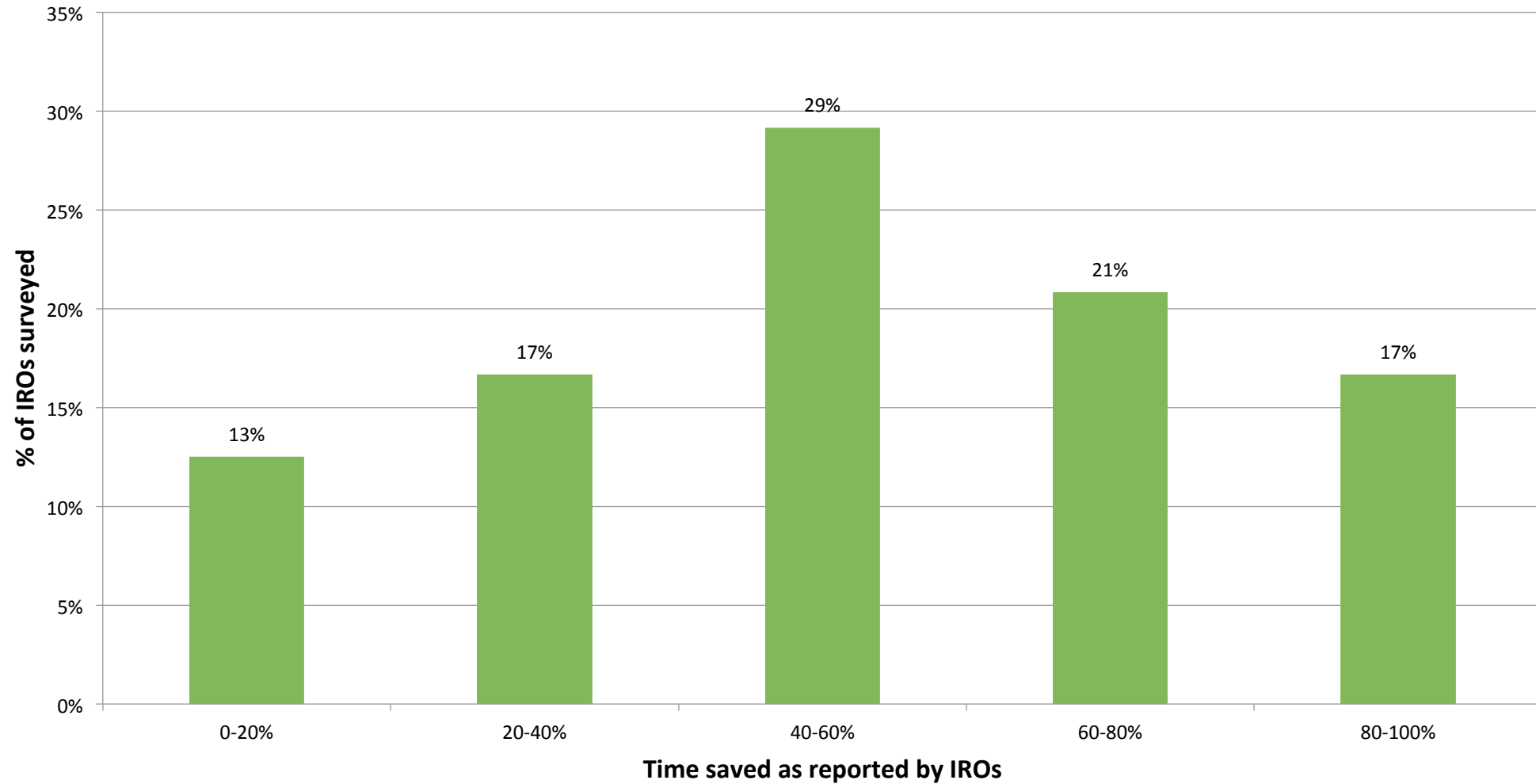
**How do we know this works?  
Will it really improve life at our  
international office?**

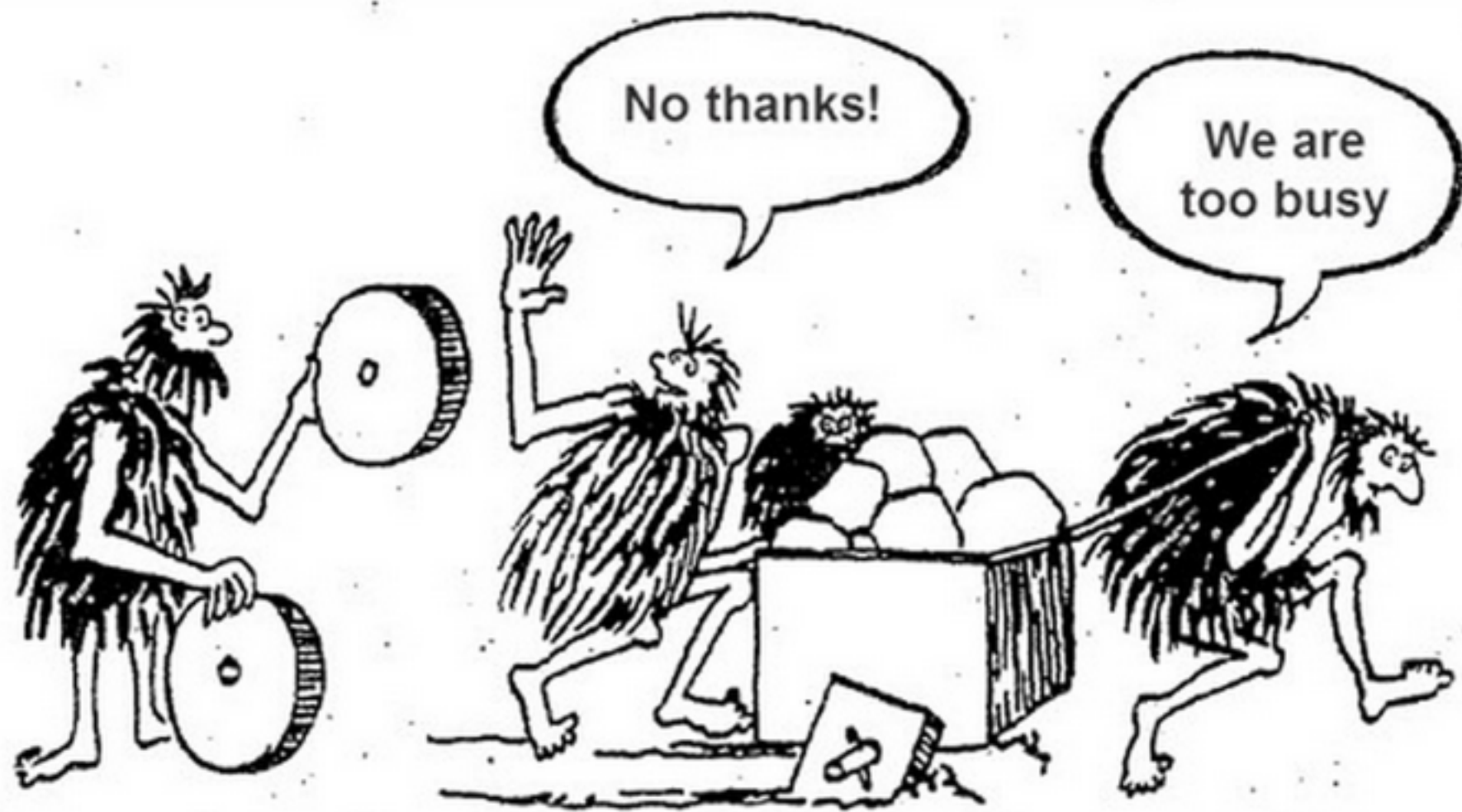


# Finding #1

Digital change is worthwhile.

# OLA efficiency gains







# Finding #2

Don't underestimate training requirements.

**ERASMUS**  
— *Going* —  
**DIGITAL**

**EC webinar** 7 March

**Vienna** 25 April

**Trondheim** 4 June

**Luxembourg** December

# Finding #3

Unicorns are not real.



## **Finding #4**

But EWP is already having a positive impact in universities across Europe!

# From the pioneers...

*“Our University has been involved in the EWP project from the beginning as we believe in the need for digitalisation of mobility processes.*

*We are very lucky to have many of the functionalities already available in our mobility management system. We are ready to exchange nominations, send and receive Transcripts of Records and mobility dates.*

*At this stage we are busy convincing our international partners to join the network. This is the perfect time to start as the nomination process will be in full swing shortly. We hope that our partners will soon share our enthusiasm for EWP!”*

Klementyna Kielak and Ewa Makal-O'Hara, University of Warsaw

## **...to the newcomers!**

*“We started using the Dashboard two years ago and never looked back. All our mobility students use OLA, and taking that step made the number of emails I receive decrease by almost 90%.*

*Such improvement is also evident in the internal communications within the university once the Dashboard became, both for academic and administrative staff, the single entry point for managing most aspects of mobilities. Externally, at first not all partners were sure if their NA were ok with digital signatures, but such doubts are decreasing over time.”*

Ignacio Rodríguez, Universidad de Alcalá



# Practical tips

Connect now.

Involve partners and students.

Ensure leadership, IRO and IT work in concert.



- Streamlined **IROs** roles and tasks, more rewarding jobs
- Improved **student** experience
- Sustained growth of the **programme**




---

A powerful, growing community driving forward the initiative

**Thank you for your attention!**

Co-funded by the  
Erasmus+ Programme  
of the European Union

